



EVENT - 6 PANEL FOLDING DISPLAY BOARDS
 user instructions

1



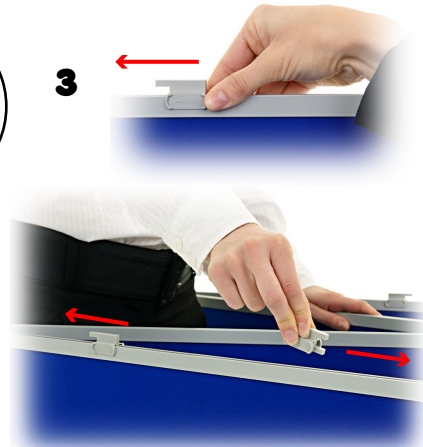
Event display board kit contains:
 Black carry bag
 Lightweight Aluminium display boards
 100 Velcro dots
 Locking clips kit

2



Remove all contents from the carry bag.
 Place one set of panels on the floor in an 'M' shape as shown. Ensure footpegs are on the floor.

3



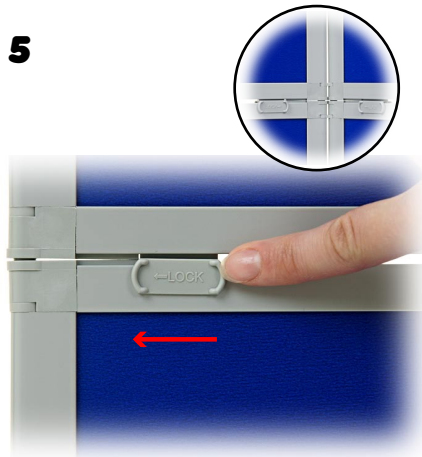
Place the plastic locking clips on the top section of the display boards.

4



Take the second set of folding display boards and place over the first set with the locking clips on.

5



Push the locking retaining clips up to the frame edges to lock the display boards together.

6



If you have purchased the optional header board kit, attach the header as per step 3.

7



Your folding exhibition display boards are ready for use. You can add additional lights available from www.rapind.com

8

